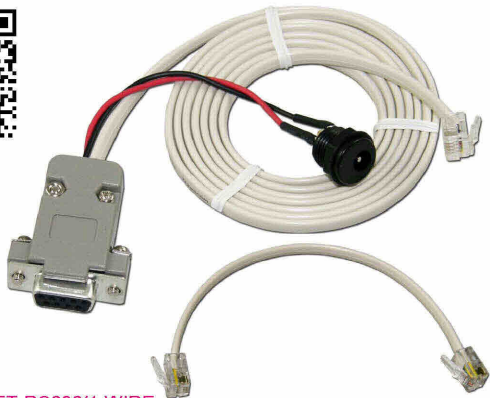


ET-RS232/1-WIRE (P-ET-A-00512)

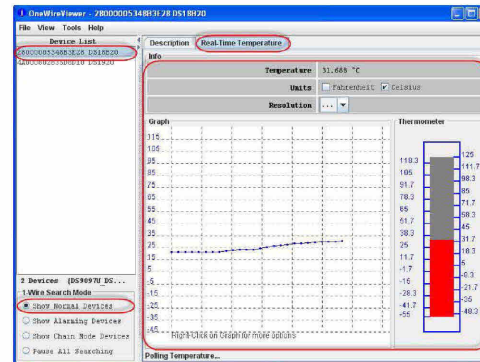


ET-RS232/1-WIRE is a connecting point for 1-WIRE device according to the standards and specification of DALLAS or MAXIM INTEGRATED; it reduces much difficulty in reading/writing data for 1-WIRE devices that require highly accurate period. This product uses IC No.DS2480B; this Chip is particularly designed for connecting with 1-WIRE device. Especially from 1-WIRE, it can be connected through PORT RS232 that is easier and more convenient to use and connect with 1-WIRE device.

There are 2 types of connection as follows;

1. **Connecting with ET-REMOTE LAN** : ETT Board that can be connected with LAN System has Connector RJ9 on Board ET-REMOTE LAN, it can be connected with ET-RS232/1-WIRE directly. Moreover, there is Command Package internal ET-REMOTE LAN for reading/writing.

2. **Connecting with general RS232 devices** : Especially, it is connected with PORT RS232 of computer PC on OS WINDOWS 7/8 (32 BIT only). MAXIM INTEGRATED provides Software Package for customers to read, write, graph, and store data (this program has already been contained in CD-ROM of ETT).

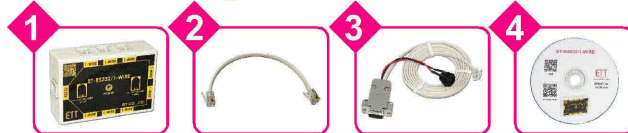


Specifications of ET-RS232/1-WIRE

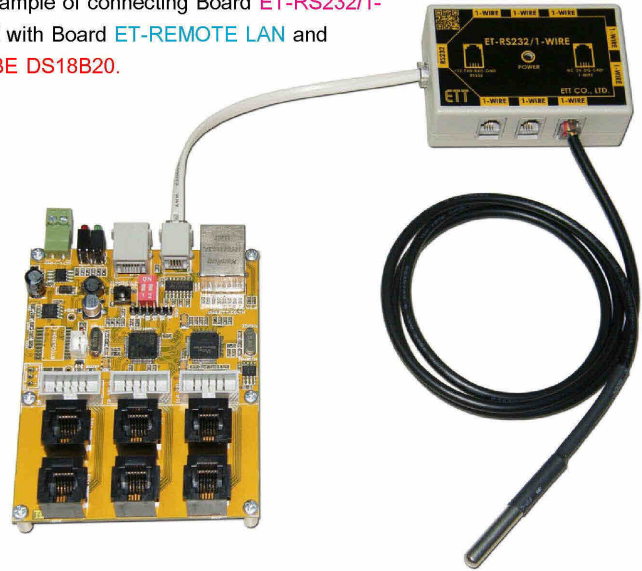
- Use Chip DS2480B SERIAL PORT TO 1-WIRE DRIVER
- Be connected through PORT RS232 as NULL MODEM (RXD,TXD,GND)
- Support BAUDRATE in the range of 9600-115200 bps
- Support connection with iBUTTON devices and 1-WIRE devices
- Have 8-CH RJ9 for connecting with 1-WIRE devices
- Have Connector PORT RS232 through Connector RJ9
- Plastic box size containing ET-RS232/1-WIRE is 7.5 x 2.5 x 5 cm.
- Use POWER SUPPLY DC 7-12VDC. If using with ET-REMOTE LAN, it does not need to use any external POWER SUPPLY because it can use Power Supply from ET-REMOTE LAN directly. If using with computer PC or other devices, it should use POWER SUPPLY " ET-SWITCHING ADAPTER 12V 1A TYPE J" (A-AP-A-00098)

ET-RS232/1-WIRE consists of...

1. Box with Circuit ET-RS232/1-WIRE
2. CABLE RJ9-RJ9-15CM
3. CABLE RS232-1-WIRE-150CM
4. CD-ROM Manual and Program



• Example of connecting Board ET-RS232/1-WIRE with Board ET-REMOTE LAN and PROBE DS18B20.



OPTION ซื้อมเพิ่มเติ่ม ใช้กับ ET-RS232/1-WIRE

• PROBE DS18B20 1M (P-ET-A-00515)



This PROBE is STAINLESS that has IC DS18B20 insides; it is shielded well and it is waterproof for 1 meter in depth. The Connector is RJ9 type to measure temperature in the range of -55°C to +125°C.

• SOCKET DS9100A & DS9100C (P-ET-A00514)



This product is used to interface and touch for reading value of iBUTTON DS1990; it is provided with Cable RJ9 with 1 meter in length. It can be connected with ET-RS232/1-WIRE directly.

• IBUTTON DS1990 & DS9093A (J-PS-A-00026)



\*\* It cannot be used with ET-REMOTE LAN.

It is iBUTTON device that consists of...  
 • DS1990A-F5: It is 1-WIRE device that has its own original 64BIT numeric (16 DIGIT) insides and it uses 2.8V-6.0V Power Supply.  
 • DS9093A: It is black plastic holder to hold up DS1990A; so, it is more convenient to hold the device.

• ET-SWITCHING ADAPTER 12V 1A TYPE J (A-AP-A-00098)



FEMALE JACK 2.5 mm.  
 Under TISI Standards and UL  
 INPUT : AC INPUT 220VAC 50/60Hz 0.5A  
 OUTPUT : 12VDC 1A