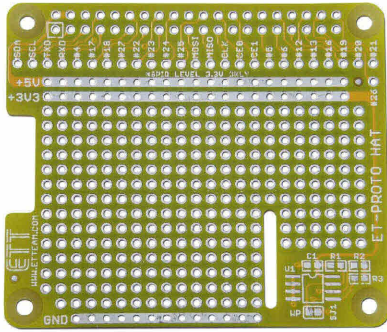
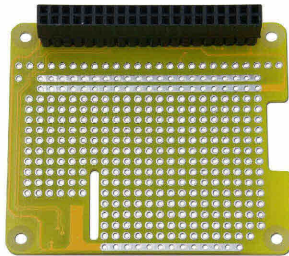




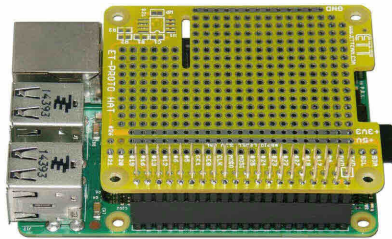
ET-PROTO HAT (P-ET-A-00564)



• It illustrates how to connect ET-PROTO HAT with Connector 2 x 20 PIN STACKABLE 25.5 mm. (This 2 x 20 PIN is not included in the PCB, it is OPTION).



• It illustrates how to connect ET-PROTO HAT, it solders 2 x 20 STACKABLE 25.5 mm. onto Board RASPBERRY PI.

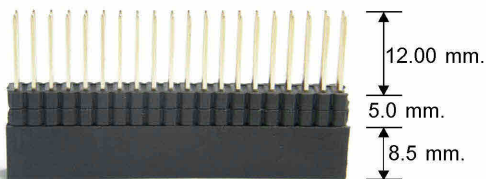


This **ET-PROTO HAT** or multi-purposed PCB as HAT (HARDWARE ATTACHED ON TOP) is specifically designed for use with Board RASPBERRY PI that has Connector 40 PIN such as PASPBERRY PI MODEL A+, RASPBERRY PI MODEL B+, RASPBERRY PI2 MODEL B; it is suitable to make prototype boards by connecting with RASPBERRY PI via Connector 40P conveniently.

SPECIFICATIONS of Board ET-PROTO HAT

- PCB size: 6.5 x 5.6 cm.; the PCB type is PTH.
- Have connecting point of PCB 40 PIN to connect with I/O PIN of Raspberry PI
- Have connectible area for ID EEPROM (OPTION)
- Have connecting point of I/O for +5V, +3.3V, GND
- Have Connector PIN STACKABLE 2 x 20 (2 x 20 PIN STACKABLE 25.5 mm. (OPTION)

2 x 20 PIN STACKABLE 25.5 mm. (A-CO-A-00289)



It is Connector 40 PIN; one side is FEMALE and another side is MALE. It is specifically long leg that is high enough and it does not touch any device under the PCB. If it requires piling boards up, this ET-PROTO HAT is suitable.

- 2 x 20 PIN, 2.54 mm. PITCH, PIN GOLD PLATED
- SIZE 8.5/5.0/12.00 mm.

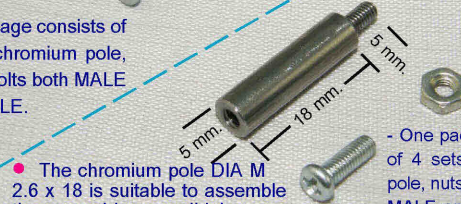
CHROMIUM POLE DIA M2.6 x 16 (P-DI-A-00005)

CHROMIUM POLE DIA M2.6 x 18 (P-DI-A-00006)

• This chromium pole DIA M2.6 x 16 is suitable to assemble at the first layer.



- One package consists of 4 sets of chromium pole, nuts and bolts both MALE and FEMALE.



• The chromium pole DIA M 2.6 x 18 is suitable to assemble the second layer and higher.

- One package consists of 4 sets of chromium pole, nuts and bolts both MALE and FEMALE.

• One package of this chromium pole DIA M2.6 x 16 consists of 4 sets of chromium pole, nuts and bolts both MALE and FEMALE. It holds and fastens HAT Boards of ETT and Board RASPBERRY PI together. This set is suitable to hold and fasten the first layer between board and RASPBERRY PI (when using 2 x 20 PIN STACKABLE 25.5 mm.).

• One package of this chromium pole DIA M2.6 x 18 consists of 4 sets of chromium pole, nuts and bolts both MALE and FEMALE. It holds and fastens between HAT Boards of ETT and Board RASPBERRY PI. This set is suitable to hold and fasten the second layer and higher board and RASPBERRY PI (when using 2 x 20 PIN STACKABLE 25.5 mm.).

• It illustrates how to assemble the chromium pole between Board RASPBERRY PI and various types of Board ET-HAT.

