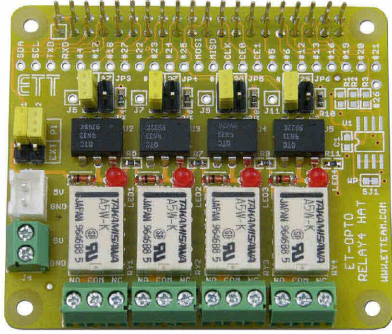


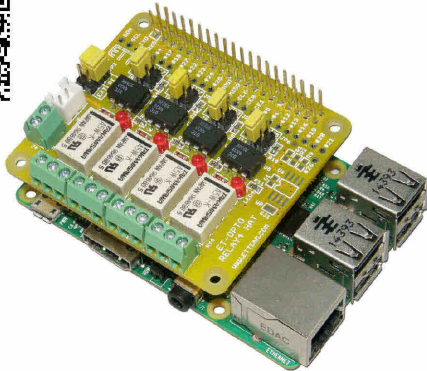


ET-OPTO RELAY4 HAT

(P-ET-A-00531)



It illustrates how to connect ET-OPTO RELAY4 HAT with Board Raspberry Pi.

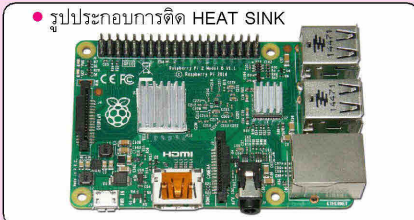


Board ET-OPTO RELAY4 HAT is specifically designed for use with Connector 40PIN of Board RASPBERRY PI; it is 4-RELAY Board.

SPECIFICATIONS of Board ET-OPTO RELAY4 HAT

- Be compatible with Board RASPBERRY PI MODEL A, MODEL B+, PI2 MODEL B
- Have connectible area to receive ID EEPROM (OPTION)
- Drive Circuit RELAY as OPTO-ISOLATION(4N33) to control and command RELAY
- Use CONTACT RELAY 5VDC 0.5A/125VAC or 1A/30VDC; and use Connector as SCREW TERMINAL BLOCK 3 PIN (NO,COM,NC)
- JUMPER chooses I/O to control all 4 RELAYS; can connect 2-RELAY Boards (8 RELAY) per 1 System
- Connector Power Supply of RELAY is provided for connecting from external board; and set JUMPER to choose Power Supply for RELAY either from internal board or external board. The Connector type is SCREW TERMINAL BLOCK 2PIN and WAFER 2.5 mm. 2PIN (it is compatible with ET-SWITCHING ADAPTER 5V 2A TYPE B (A-AP-A-00095))
- Use CONNECTOR 2 x 20 PIN STACKABLE 25.5 mm. that is specifically designed; so, it can pile boards up.
- PCB size: 6.5 x 5.6 mm. Set of chromium pole is OPTION, please choose proper size and type of pole according to board connection.
- Board ET-OPTO RELAY4 HAT includes Board ET-OPTO RELAY4 HAT, Document and Example Programs.

PI HEATSINK SET (A-BX-I-00056)



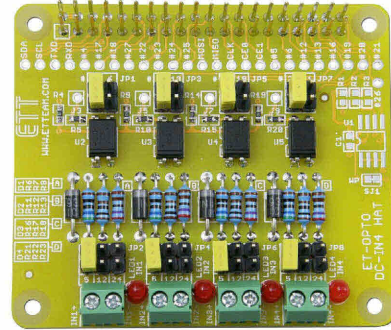
รูปประกอบการติด HEAT SINK

There are 3 HEAT SINKs in the same package with glue of its own that can be adhered to IC directly. It adheres to IC on Board RASPBERRY PI-B-512M, PI2 MODEL B, PI MODEL A, PI MODEL B+.

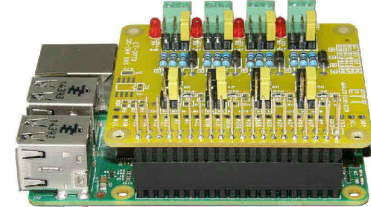
- In case of PI-B-512M, it is adhered to 3 positions on CHIP; CPU, LAN and POWER SUPPLY.
- In case of other RASPBERRY versions, it is adhered to 2 positions on CHIP; CPU and LAN.

ET-OPTO DC-IN4 HAT

(P-ET-A-00532)



It illustrates how to connect ET-OPTO DC-IN4 HAT with Board Raspberry Pi.



ET-OPTO DC-IN4 HAT is specifically designed for use with Connector 40PIN of Board RASPBERRY PI; this INPUT Board is 4-CH OPTO ISOLATION.

SPECIFICATIONS of Board ET-OPTO DC-IN4 HAT

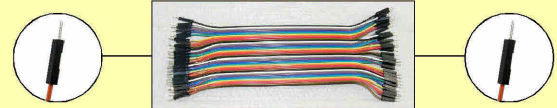
- Be compatible with Board RASPBERRY PI MODEL A, MODEL B+, PI2 MODEL B
- Have connectible area to receive ID EEPROM (OPTION)
- Be used as INPUT Board to receive Signal DC; separate operation by PC817 OPTO ISOLATION; separate Power System into 4 channels.
- Set JUMPER to properly choose 3 alternative levels of INPUT; all 4-Ch is independently separated; 5VDC, 12VDC, 24VDC
- Set JUMPER to choose I/O to connect and receive all 4-CH INPUT; so, it can connect 2 INPUT Boards (8 INPUT) per 1 System
- Connector 4-CH INPUT is SCREW TERMINAL BLOCK 2 PIN
- Use CONNECTOR 2 x 20 PIN STACKABLE 25.5 mm. that is specifically long leg, so it can pile boards up.
- PCB size: 6.5 x 5.6 mm. Set of chromium pole is OPTION, please choose proper size and type according to board connection.
- Board ET-OPTO DC-IN4 HAT includes Board ET-OPTO DC-IN4 HAT, Document and Example Programs

RW20MM-40SET (A-CB-A-00051)

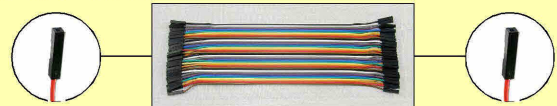
RW20FF-40SET (A-CB-A-00052)

RW20MF-40SET (A-CB-A-00053)

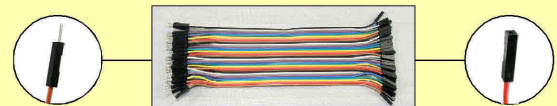
These flexible CABLEs are connected with boards or PROJECT BOARDs; it is flexible and 20cm in length. There are 3 sizes that can be properly chosen, depending on type of connection. There are 40 wires per a set.



RW20MM-40SET : Both terminals are MALE with 20cm in length to connect with FEMALE PIN HREADER or PROJECT BOARD.



RW20FF-40SET : Both terminals are FEMALE with 20cm in length to connect with MALE PIN HREADER.



RW20MF-40SET : One terminal is MALE and other one is FEMALE, it is 20cm in length.