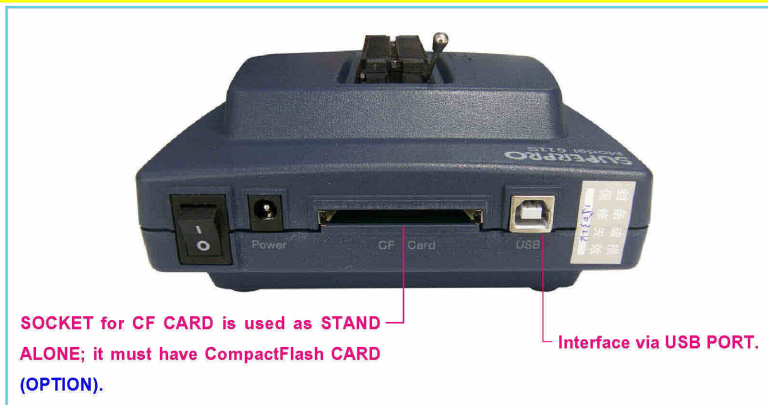


## SUPERPRO/611S (C-YA-P-00014)

### ULTRA-HIGH-SPEED UNIVERSAL PROGRAMMER

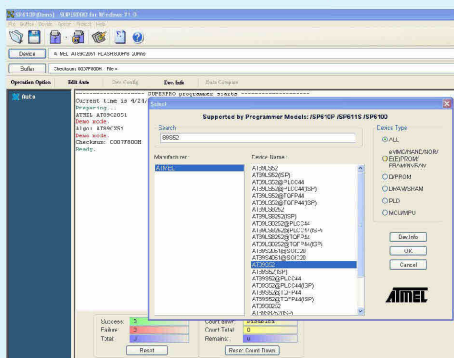


Compare time to PROGRAM and VERIFY of SUPERPRO/611S and SUPERPRO/3000U		
Device	SUPERPRO/611S Program+Verify (Sec)	Compare with SP3000U
AT28C64B	0.8 (P)+0.1 (V) = 0.9 (s)	1.2 (P)+0.8 (V) = 2.0 (s)
24AA128	2.7 (P)+1.8 (V) = 4.5 (s)	5.0 (P)+4.0 (V) = 9.0 (s)
QB25F640S33B60	29.0 (P)+14.4 (V) = 43.4 (s)	55.2 (P)+41.4 (V) = 96.6 (s)
AT89C55WD	2.5 (P)+0.4 (V) = 2.9 (s)	3.3 (P)+1.0 (V) = 4.3 (s)
S25FL064A	43.9 (P)+14.7 (V) = 58.6 (s)	72.8 (P)+41.4 (V) = 114.2 (s)
PIC16F876A	10.1 (P)+0.8 (V) = 10.9 (s)	22.1 (P)+06.2 (V) = 28.3 (s)
PIC18F442	5.1 (P)+1.1 (V) = 6.2 (s)	13.6 (P)+06.7 (V) = 20.3 (s)

• When using as STAND ALONE, it has Display and Key SW. It can run without connecting with computer but it must have CompactFlash Card (OPTION).



- When using as STAND ALONE, it can setup PASSWORD to protect IC from COPY.
- Run program on the Operating System of WINDOWS 98/ME/XP/VISTA/7



• PROGRAM

• SUPERPRO/611S includes...

1. SUPERPRO/611S
2. CD-ROM Program
3. POWER SUPPLY AC 100-240V/50-60 Hz
4. CABLE USB



**SUPERPRO/611S is ULTRA-HIGH-SPEED UNIVERSAL PROGRAMMER** that replaces SUPERPRO/3000U and 501S. There are 2 MODEs in one device; firstly, it can be connected with computer PC via PORT USB; and secondly, it is used as STAND ALONE MODE, it loads and copies data inside the device and it can run without connecting with computer PC.

- Be compatible with 241 IC manufacturers, 36,519 IC No. and more in the nearer future
- Be used with IC range 1.2V to 5V with circuit to protect IC from damaged when inserted on alternate side.
- Be compatible with EPROM, PAGED EPROM PARALLEL AND SERIAL EEPROM, FPGA CONFIGURATION, SERIAL PROM, FLASH MEMORY (NOR AND NAND), BPROM, NVRAM, SPLD, CPLD, EPLD, FIRMWARE HUB, MICROCONTROLLER, MCU, STANDARD LOGIC
- Use TEXT TOOL 48 PIN, it is compatible with many IC No. from 8PIN to 48 PIN; it can expand Pin size by ADAPTER to be used with more IC No. such as SSOP, PLCC (ADAPTER is OPTON, not included in the package).
- PROGRAM HIGHT-DENSITY FLASH MEMORY can copy EPROM quickly
- 6 KEY KEYPAD with DISPLAY 20 x 4 LCD BACKLIGHT and Memory Expansion as CompactFlash Memory Card
- Connect with computer via PORTT USB 2.0
- If using as STAND ALONE, it requires CompactFlash CARD (OPTION); can setup PASSWORD to protect the device from COPY. This STAND ALONE MODE is suitable for user who prepares data completely and needs to COPY many IC directly, without using computer. Moreover, it is suitable for using outdoor.
- Run by the Operating System of WINDOWS 98/ME/XP/VISTA/7
- UPDATE PROGRAM for using with newer IC No. from internet, please visit [www.xeltek-cn.com](http://www.xeltek-cn.com) or read more information of newer IC No. from this web site.