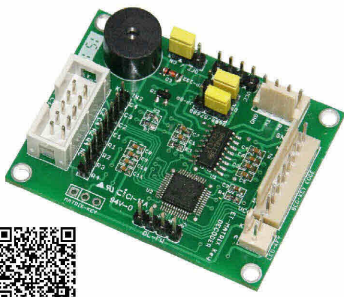


ET-MATRIX KEY DECODER (P-ET-A-00525)



Board **ET-MATRIX KEY DECODER** is designed to scan KEY and decode the position of the pressed key without connecting CPU of Board with KEY; so, it is more convenient and easier to use.

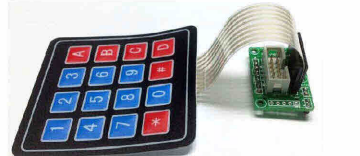
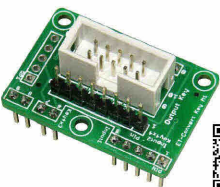
SPECIFICATIONS of ET-MATRIX KEY DECODER

- Use MCU STM8S108

- Support maximum MATRIX KEY PAD 4x4; it also supports MATRIX 4x3 or less
- 2 ways to send OUTPUT Data of pressing key
 - BINARY CODE (BCD 8421), it sends KEY CODE and state of pressing Key as Signal TTL
 - ASCII CODE, it sends KEY CODE via PORT RS232; it is RS232 TTL type and RS232 via LINE DRIVER. It sets BAUD RATE as 9600 and 57600
- When pressing KEY, it produces BEEP sound from Buzzer and LED also shows state of pressing Key
- Use POWER SUPPLY 3.3V or 5V Current 10-20mA
- INPUT from KEY SW is connected via Connector 10PIN BOX HEADER or 8PIN HEADER Single Row
- OUTPUT sends KEY SW via Connector 4 PIN HEADER, WAFER 2.54mm. 4PIN and 8PIN
- Be compatible with ET-CONV KEY M1 to convert CABLE connection and it can be connected with KEY of ETT conveniently
- PCB size is the same as ET-MINI: 4.4 x 5.6 cm
- **ET-MATRIX KEY DECODER ...** includes

1. Board
2. CD-ROM Manual/ Example Program

ET-CONV KEY M1 (P-ET-A-00526)



• Example of connecting with 4x4 MATRIX KEY PAD

ET-CONV KEY M1 is PCB with Connector to convert KEY PAD as MATRIX 4x4 and 4x3 to Connector 10PIN BOX HEADER; it is easier to connect with Connector 10PIN on Board ET-MATRIX KEY DECODER or I/O Board as 10PIN ET of ETT conveniently.

- Connect with KEY MATRIX of ETT such as 12 KEY TELEPHONE KEY PAD, KEYPAD 4x4 BLACK, 4x4 MATRIX KEY PAD
- PCB Size: 3.6 x 2.4 cm.
- **ET-CONV KEY M1 ...** includes

1. Board
2. Manual

4x4 MATRIX KEYPAD (C-YA-A-00186)



KEY SPECIFICATIONS

- MAXIMUM RATING : 24 VDC 30 mA
- INTERFACE : 8-PIN, 2.54 mm. PITCH FEMALE
- 4 x 4 MATRIX KEY MEMBRANE
- CABLE LENGTH 8.5 cm. (INCLUDE CONNECTOR) x 2.0 cm.
- WEIGHT 8 g.
- INSULATION SPEC : 100 M Ohm, 100 V
- CONTACT BOUNCE <= 5 ms.
- ON CONTACT SWITCH : 30-400 Ohm
- LIFE EXPECTANCY 1 MILLION CLOSURES
- OPERATION TEMPERATURE -20 TO +40 °C
- DIMENSION : KEY PAD 2.7 x 3.0 inch (6.9 x 7.6 cm.)
- MOUNT STYLE : PLEASE REMOVE THE ADHESIVE TAPE ON THE BACK OF THE KEY PAD AND STICK THE KEY PAD ON CLEAN SURFACE

ET-MINI PWR5/ADJ-3A (P-ET-A-00506)



เป็น 2 ชุดวงจร POWER SUPPLY แบบ STEP-DOWN VOLTAGE REGULATOR โดยมีวงจรแบบ +5VDC/3A และแบบปรับค่า VOLTAGE 1.23 - 35V/3A (ขึ้นอยู่กับ INPUT VOLTAGE ที่เข้าด้วย)



- INPUT DC POWER 7 - 35VDC
- +5VDC/3A OUTPUT ใช้ LM2576T-05
- VOLT ปรับค่าได้ 1.23 - 35V/3A OUTPUT ใช้ LM2576T-ADJ โดยใช้ VR ปรับค่า
- ขั้วต่อ INPUT DC แบบ 2 PIN PCB TERMINAL SCREW TYPE
- ขั้วต่อ OUTPUT DC แบบ 2 PIN PCB TERMINAL SCREW TYPE
- ขนาดตัวบอร์ด (W x L x D) 5.60 x 4.30 x 2.20 cm. พร้อมขาตั้งโลหะสูง 1.10 cm.

ET-SWITCHING ADAPTER 5V 2A TYPE U (A-AP-A-00106)



It is DC POWER SUPPLY as SWITCHING type under standard of TIS and UL.

INPUT : AC INPUT 220VAC 50/60 Hz 0.5A
 OUTPUT : DC 5V/2.0A (10W)
 : Connector MICRO USB TYPE B MALE

ADAPTER is 2 PIN WALL MOUNT.

S-200-5 (A-AP-A-00102)



MODEL	S-200-5
DC OUTPUT VOLTAGE	5V DC
OUTPUT CURRENT	40 A
OUTPUT POWER	200 W
INPUT VOLTAGE	AC 88V-132V / AC 180-264V (VIA SWITCH)
INPUT FREQUENCY	47~ 63 Hz
OUTPUT VOLTAGE	ADJUSTMENT BY POTENTIOMETER 0-5VDC
RISE TIME	FULL LOAD FOR 50 ms (TYPICAL)
HOLD TIME	FULL LOAD FOR 20 ms (TYPICAL)
WORK ENVIRONMENT	- 20 ~ +55 C, 20% ~ 93% RH IN-DOOR USE ONLY
SAFETY COMPLIANCE	CE / ROHS
MTBF	> 50,000 HOURS
SHELL MATERIAL	METAL CASE / ALUMINUM BASE
SIZE	198 x 98 x 40 mm.
WEIGHT	650 g
OUTPUT/INPUT CONNECTOR	TERMINAL BLOCK 9.50 mm. 3 PIN - AC LINE (L, N, GND) 4 PIN - DC OUTPUT (COM, COM, +V, +V)