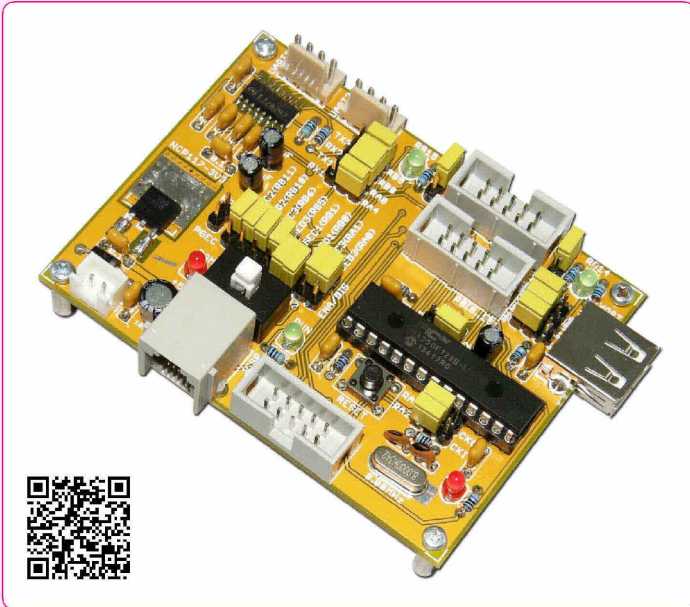


ET-BASE PIC32MX250F128B
(P-ET-A-00513)

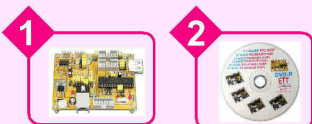


This is the latest ETT Board in the series of PIC32MX of MICROCHIP; it uses 32 BIT MCU No.PIC32MX250F128B 28- on board.

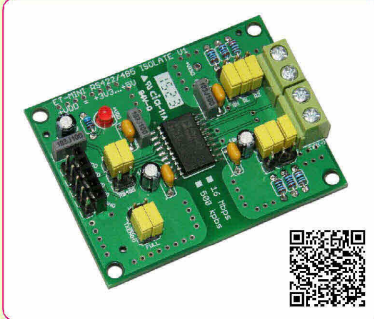
SPECIFICATIONS

- Use MCU No.PIC32MX250F128B 28 PIN DIP
 - 32 BIT CORE 50 MHz/ 83 DMIPS MIPS32M4K
 - INTERNAL OSCILLATOR 8 MHz, PHASE LOCK LOOP
 - 128 KBYTE FLASH PROGRAM, 3 KBYTE FLASH BOOT MEMORY
 - 32 KBYTE SRAM, WATCHDOG TIMER
 - 21 I/O PIN, 19 PIN REMAPPABLE I/O, 5 TIMER/ 5 CAPTURE/ 5 COMPARE, 2 UART, 2 SPI, 5 EXTERNAL INTERRUPT, 2 I2C, 9 CH ADC 10 BIT, 1 USB
 - 2.3V TO 3.6 V RUN
- Use CRYSTAL Frequency 8.00 MHz
- 2 CH CONNECTOR RS232 PORT 4 PIN ETT
- 3 of CONNECTOR I/O PORT 10 PIN ETT; RA0-4, RB0-7, RB8-15
- 2 of LED to test on board; RB14, RB15
- CONNECTOR RJ11, ICSP connects with Programmer and Debugger Device under ICSP standards of MICROCHIP; it is compatible with ICD3 or PICKIT3. For ETT product that is compatible with this board is ET-PGM PIC PK3 (P-ET-A-00463) And ET-PGM PIC PK3 PLUS (P-ET-A-00464)
- 1 SW and JUMPER choose and switch Signals to be ICSP and GPIO; and LED shows status of RUN or PROGRAM.
- 1 PORT USB HOST TYPE B with Jumper to connect/disconnect
- I/O PORT PIN of PIC32MX can receive the maximum voltage at 3.3V; except RB5-RB11, it can receive INPUT LOGIC 5V.
- +5VDC POWER SUPPLY for board with HEADER TYPE B, it is compatible with ET-SWITCHING ADAPTER 5V 2A TYPE B (A-AP-A-00095)
- PCB Size: 8.20 x 6.20 cm.
- ET-BASE PIC32 consists of ...

1. Board
2. CD-ROM Manual and Programs



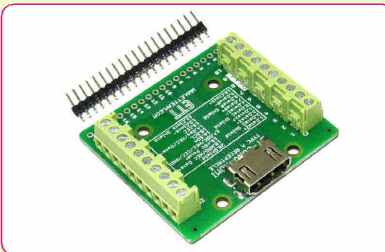
ET-MINI 422/485 ISOLATION
(P-ET-A-00528)



Board ET-MINI 422/485 ISOLATION is in the family of MINI BOARD that converts RS232(TTL) to RS232/485 as signal isolation (ISOLATED) to protect the circuit from damaged because of defective Power System or thunderbolt to the system. It reduces signal interference.

- Use IC NO.ADM2587E from ANALOG DEVICES
- Receive Signal RS232 (TTL 3V or 5V) and convert to RS422(FULL DUPLEX) or RS485(HALF DUPLEX)
- Separate Signal ISOLATED via RS232 and RS422/485 by DIGITAL ISOLATION COUPLER 2500 VRMS (1 MINUTE)
- DATA RATE for sending/receiving data is not higher than 500 kbps
- 256 Points can be connected to send/receive data in the system
- 4 PIN TERMINAL sends/receives Data RS422/485
- 5 PIN HEADER 1x5 MALE and 1x5 FEMALE in the part of TX, RX, DIR, VCC, GND on the side of RS232(TTL)
- Use POWER SUPPLY 3.3 to 5 VDC
- PCB Size: 4.4 x 5.6 cm.
- The Package includes Board and manual

ET-CONV HDMI (P-ET-A-00521)



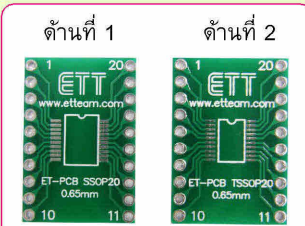
It is PCB CONVERTER with Header HDMI TYPE A 19PIN that is converted to Screw TERMINAL 20PIN. Moreover, user can customize and solder 20PIN HEADER MALE into PCB as required.

ET-CONV MICRO USB-B
(P-ET-A-00534)



ET-CONV MICRO USB-B is PCB CONVERTER that converts Connector 5 PIN MICRO USB TYPE B to PIN HEADER 2.54mm PITCH, 5-HOLE. PCB SIZE is 14.00 x 15.00 mm.

ET-PCB TSSOP20 (A-PC-E-00556)



It is PCB CONVERTER for IC 20PIN SSOP and 20PIN TSSOP with 0.65mm. PITCH to convert to be 20PIN DIP TYPE (15.24mm. width). PCB SIZE is 1.8 x 2.5 cm.

***This model is more special because one side of 20PIN SSOP is 5.30mm width and another one side is 20PIN TSSOP with 4.4mm width.

28BYJ-48-5V (A-MO-M-00143)



- Be 5-WIRE 4-PHASE STEPPING MOTOR
- POWER 5VDC : SPEED VARIATION RATIO 1/64
- STRIDE ANGLE 5.625°/64 : FREQUENCY 100 Hz
- DC RESISTANCE 50 OHM + 7% (25 °C)
- IN-TRACTION TORQUE > 34.3mN.m (120 Hz)
- 28 mm. Diameter, 19.mm Height