

**ET PCB CONVER SMD SET**

**1. ET-PCB TQFP144 (A-PC-E-00458)**



It is PCB CONVER that converts PIN IC TQFP 144 PIN PITCH 0.5mm. into 4 of PIN HEADER 18 x 2 PIN.

● PCB SIZE 4.3 X 4.3 CM.

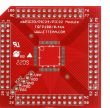
**2. ET-PCB MC TQFP100/0.5 (A-PC-E-00461)**



It is PCB CONVER to convert IC 100 PIN TQFP PITCH 0.5mm., MCU MICROCHIP into 4 of 26 PIN HEADER.

● PCB SIZE 5.1 x 5.1 cm.

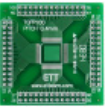
**3. ET-PCB MC TQFP100/0.4 (A-PC-E-00462)**



It is PCB CONVER to convert IC 100 PIN TQFP PITCH 0.4mm., MCU MICROCHIP into 4 of 26 PIN HEADER.

● PCB SIZE 5.1 x 5.1 cm.

**4. ET-PCB TQFP100 (A-PC-E-00439)**



ET-PCB TQFP100 is PCB CONVER and its IC PIN is TQFP 100 PIN with 0.5mm. and 0.4mm. PITCH that are in the type of 4 sets of PIN HEADER 26 PIN. There are 2 types of pitch that can be used; in this case, PCB has 2 sides; one side is pitch 0.4mm and the other one side is pitch 0.5mm.

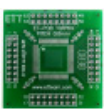
**5. ET-PCB TQFP80 (A-PC-E-00440)**



It is PCB CONVER that converts PIN IC TQFP 80PIN PITCH 0.5mm. into 4 of PIN HEADER 20PIN.

● PCB SIZE 4.3 X 4.3 CM.

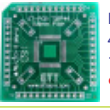
**6. ET-PCB TQFP64 (A-PC-E-00441)**



It is PCB CONVER that converts PIN IC TQFP 64PIN PITCH 0.8mm. into 4 of PIN HEADER 16PIN.

● PCB SIZE 4.3 X 4.3 CM.

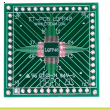
**7. ET-PCB TQFP44 (A-PC-E-00457)**



It is PCB CONVER that converts PIN IC TQFP 44PIN PITCH 0.8mm. into 4 of PIN HEADER 11PIN.

● PCB SIZE 4.1 X 4.1 CM.

**9. ET-PCB LQFP48 (A-PC-E-00333)**



It is LQFP48 PIN PITCH 0.5 mm. IC PCB CONVER and is converted into 4-CH.PIN HEADER 12 PIN.

● PCB SIZE 3.8 x 3.8 CM.

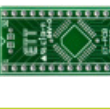
**8. ET-PCB LQFP64 (A-PC-E-00272)**



It is LQFP64 PIN PITCH 0.5 mm. IC PCB CONVER and is converted into 4-CH.PIN HEADER 16 PIN.

● PCB SIZE 3.8 x 3.8 CM.

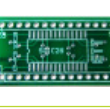
**10. ET-PCB TQFP32 (A-PC-E-00442)**



It is PCB CONVER that converts PIN IC TQFP 32PIN PITCH 0.8mm. into DIP 32PIN.

● PCB SIZE 1.9 X 4.2 CM.

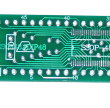
**11. ET-PCB SOIC28 (A-PC-E-00445)**



It is PCB CONVER that converts PIN IC SOIC 28PIN PITCH 1.27 mm. into DIP 28PIN (15.24mm in width).

● PCB SIZE: 2 X 3.8 CM.

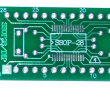
**12. ET-PCB SSOP48 (A-PC-E-00269)**



It is SSOP 48 PIN PITCH 0.65 mm. IC PCB CONVER and is converted into DIP 48 PIN (15.24 mm. Width Pin)

● PCB ZISE 2 X 6.3 cm.

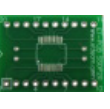
**13. ET-PCB SSOP28 (A-PC-E-00270)**



It is PCB CONVER to convert IC SSOP 28 PIN PITCH 0.65 mm. to be DIP 28 PIN (15.24 mm. width) and its

● PCB SIZE is 2 x 3.8 cm.

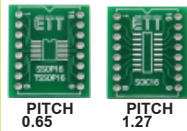
**14. ET-PCB SSOP 20 (A-PC-E-00396)**



It is PCB CONVER to convert IC SSOP 20 PIN PITCH 0.65 mm. to be DIP 20 PIN (15.24 mm. width) and its

● PCB SIZE is 2 x 2.75 cm.

**15. ET-PCB SOIC16 (A-PC-E-00527)**



It is PCB CONVER; in this case, one side of PCB converts IC SSOP16, TSSOP16 PIN into DIP 16 PIN (15.24 mm. Pitch) and other one side of PCB converts IC SOIC16 PIN into DIP 16 PIN.

**16. ET-PCB SSOP16 (A-PC-E-00397)**



It is PCB CONVER to convert IC SSOP 16 PIN PITCH 0.65 mm. to be DIP 16 PIN (15.24 mm. width) and its PCB SIZE is 2 x 2.3 cm.

**17. ET-PCB SSOP14 (A-PC-E-00398)**



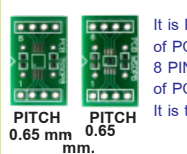
It is PCB CONVER to convert IC SSOP 14 PIN PITCH 0.65 mm. to be DIP 14 PIN (15.24 mm. width) and its PCB SIZE is 2 x 2 cm.

**18. ET-PCB SOP20 (A-PC-E-00271)**



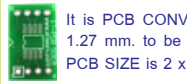
It is SOP 20 PIN PITCH 1.27 mm. IC PCB CONVER and is converted into DIP 20 PIN (15.24 mm. Width Pin)

**19. ET-PCB TSSOP 8 (A-PC-E-00464)**



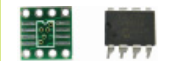
It is PCB CONVER; in this case, one side of PCB converts IC TSSOP 8 PIN into DIP 8 PIN (15.24 mm. Pitch) and other one side of PCB converts IC MSOP8 into DIP 8 PIN. It is two types in one PCB CONVER.

**20. ET-PCB SOP 8 (A-PC-E-00399)**



It is PCB CONVER to convert IC SOP 8 PIN PITCH 1.27 mm. to be DIP 8 PIN (15.24 mm. width) and its PCB SIZE is 2 x 1.2 CM.

**21. ET-PCB SOIC 8 TO DIP 8 (A-PC-E-00465)**



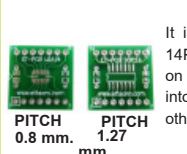
It is PCB CONVER to convert IC SOIC 8 PIN PITCH 1.27 mm. into DIP 8 PIN (7.62 mm. Pitch). It is able to connect pin and replace IC DIP 8 PIN instantly; for example, if IC DIP 8 PIN is not made any more, it is able to use IC SOIC 8 PIN in the circuit instead.

**22. ET-PCB SOT-23-6 (A-PC-E-00472)**



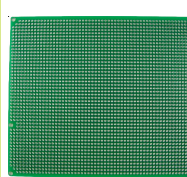
It is PCB CONVER to convert SOT-23 6 PIN PITCH 0.95 mm. into DIP 6PIN (7.62 mm. Pitch).

**23. ET-PCB LGA14 (A-PC-E-00482)**



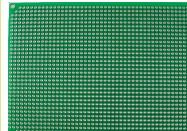
It is PCB CONVER to convert IC LGA 14PIN into DIP 14PIN (15.24mm. width) on one side and it converts SOIC 14PIN into DIP 14PIN (15.24mm. width) on another one side.

**PROJECT PCB M3 (C-YE-B-00007)**



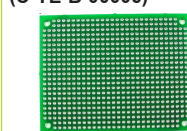
It is designed to use with ETT's Board such as CP-PIC V3, CP-AVR V3, CP-JR51AC2 V1 conveniently. User can attach Project Board with Board by using knot to connect between board and PCB.

**PROJECT PCB M4 (C-YE-B-00009)**



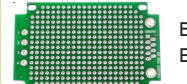
● PCB SIZE 9 x 15 cm.

**PROJECT PCB M1 (C-YE-B-00006)**



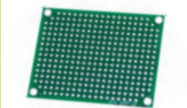
● PCB SIZE 6 x 8 cm.

**PROJECT PCB M5 (C-YE-B-00012)**



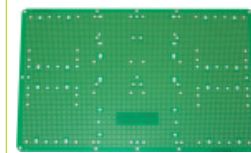
BE ABLE TO BUILD INSIDE ET-PROJECT BOX 1

**PCB MINI PCB (C-YE-B-00014)**



It is PCB PTH for interfacing additional circuits and its size is same as ET-MINI.

**PCB-BASE STAND (A-PC-E-00339)**

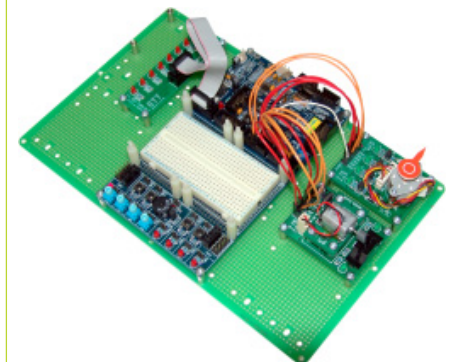


● PCB SIZE 15.5 x 24.5 cm.

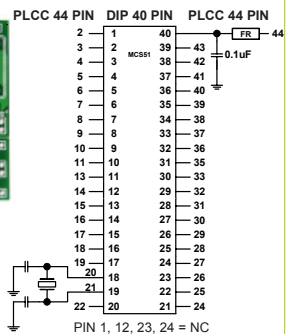
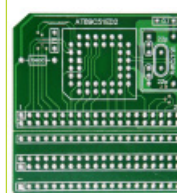
**ET-MULTI KIT BASE STAND (P-ET-A-00311)**



It is component to interface with ETT boards by using PCB-BASE STAND to be base supporter, so user can arrange test board systematically because there's a box. It is good to keep all components in the box and user can carry it to any place. It can be used with ETT Boards such as CP-JR SIZE, ET-MINI I/O BOARD, ET-10PIN TEST and etc.



**ET-PCB MCS51 PLCC 44 TO DIP 40 (A-PC-E-00503)**



Complete assembled board

ET-PCB MCS51 PLCC 44 TO DIP 40 is PCB CONVER that has been designed to use with CPU MCS51; there is both DIP 40 PIN and PLCC 44 PIN. It converts pin interface from CPU 44 PIN PLCC into CPU 40 PIN DIP; it is used when it runs out of CPU DIP 40 PIN but there is only 44 PIN PLCC. It can be used with No.P89C51, P89V51, P89LV51, AT89C51, AT89S51 and etc.

**\*\* NOTE \*\*** This product is only PCB, other devices on PCB that are assembled with this product and shown in the picture above are used to illustrate only.