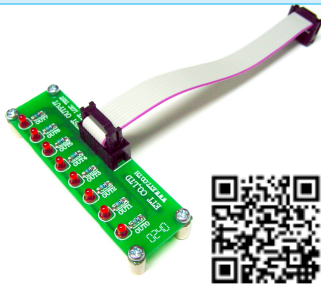


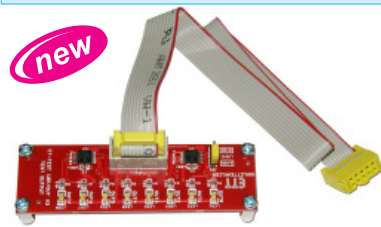
**ET-TEST 10P/OUT (P-ET-A-00101)**



It is experimental board for test Output of ETT's Ports as 10 PIN ET BUS I/O or 10 PIN I2C IN/OUT such as CP-AVR V4, CP-JR908GP32 V2, CP-PIC V4, CP-JR51AC2 V2, CP-BS2P40, CP-JRBS2P40 and etc. It uses 8-CH.LED for test and display Output.

- 8-CH. RED 3mm.LED OUTPUT
- CONNECTING WITH 10 PIN ET BUS I/O
- PCB SIZE 8.3 x 2.5 CM.
- 1-CH.10 PIN PAIR CABLE

**ET-TEST 10P/OUT V3 (P-ET-A-00486)**

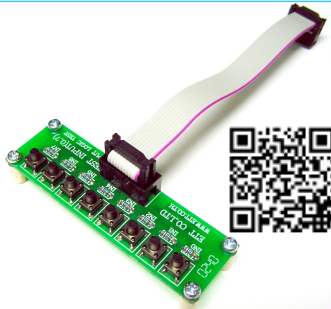


- OUTPUT uses 8 of LED SURFACE MOUNT
- Interface with Connector 10 PIN ET-BUS I/O
- Be compatible with MCU 3.3V-5V
- Setup Logic that received through INPUT to set LED OUTPUT either to be ON or OFF by Logic '0' or '1'

This is Display OUTPUT LED 8 BIT to receive Signal OUTPUT from PORT of Microcontroller (MCU) and then display data through LED; it is compatible with MCU 3.3V-5V. Moreover, it can setup LOGIC that is received through INPUT to set LED OUTPUT either to be ON or OFF by Logic '0' or '1'. It can interface with PORT of ETT Board that is Connector 10 PIN ET BUS I/O or 10 PIN I2C IN/OUT such as various versions Board ET-BASE, CP-JR ARM7 LPC2148, CP-JR ARM7 LPC2138, CP-PIC USB/4550 (ICD2). It uses LED in the format of SURFACE MOUNT in the part of OUTPUT Display.



**ET-TEST 10P/INP (P-ET-A-00102)**



It is experimental board for test Input of ETT's Ports as 10 PIN ET BUS I/O or 10 PIN I2C IN/OUT such as in board CP-AVR V4, CP-JR908GP32 V2, CP-PIC V4, CP-JR51AC2 V2, CP-BS2P40, CP-JRBS2P40, and etc. There's 8 channel Mini Switch SW Input.

- 8-CH.MINI SWITCH SW INPUT
- CONNECTING WITH 10 PIN ET BUS I/O
- PCB SIZE 8.3 x 2.5 CM
- 1-CH.10 PIN PAIR CABLE

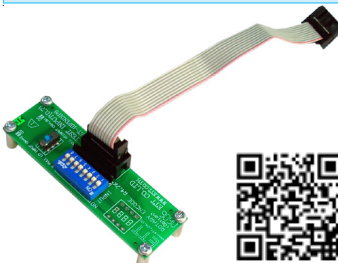
**ET-TEST 10P/ADC (P-ET-A-00103)**



It is experimental board for test A-TO-D and D-TO-A Input of ETT's Ports as 10 PIN ADC I/O such as CP-AVR V4, CP-JR908GP32 V2, CP-PIC V4, CP-JR51AC2 V2 and etc.

- 8-CH.VR TO ADJUST 10K OF INPUT ADC
- CONNECTING WITH 10 PIN ADC I/O
- PCB SIZE 8.30 x 2.5 CM
- 1-CH.10 PIN PAIR CABLE

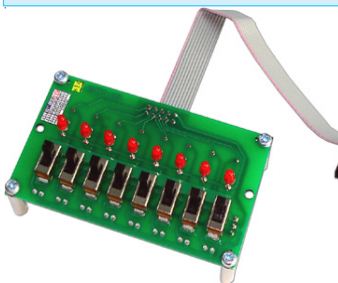
**ET-TEST 10P/DIP8 (P-ET-A-00113)**



It is experimental board for test Input of ETT's Ports as 10 PIN ADC I/O such as CP-AVR V4, CP-JR908GP32 V2, CP-PIC V4, CP-JR51AC2 V2 and etc. with 8-CH.DIP SW.

- 8-CH.DIP SW INPUT
- CONNECTING WITH 10 PIN ET BUS I/O
- PCB SIZE 8.3 x 2.5 CM
- 1-CH.10 PIN PAIR CABLE

**ET-TEST 10P/SWLED (P-ET-A-00213)**



It is experimental board for test Input of ETT's Ports as 10 PIN ET SW SLIDE with LED for test and display SW and is able to adapt as Dial of SW.

- 8-CH. 3 PIN SW SLIDE INPUT
- 8-CH. LED OUTPUT OF SW
- CONNECTING WITH 10 PIN ET BUS I/O
- PCB SIZE 8.3 x 5 CM

**ET-TEST 10P/OUT V2 (P-ET-A-00430)**



It is board to test OUTPUT of PORTs on board from ETT that is Connector 10PIN ET BUS I/O or 10PIN I2C IN/OUT such as Board ET-BASE, CP-AVR V4, CP-PIC V4. It uses LED to show the operating status of OUTPUT...

- OUTPUT uses 8 of yellow LED SURFACE MOUNT
- Interface with Connector 10PIN ET BUS I/O
- PCB SIZE: 4 x 2.5 CM
- 1 of 10PIN Pair Cable to interface with board

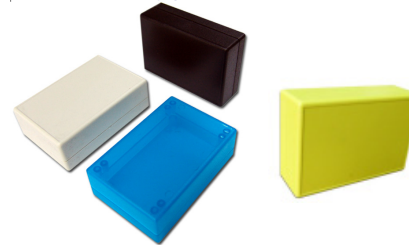
**ET-PROJECT BOX1 S (ฟ้า) (A-BX-E-00023)**

**ET-PROJECT BOX1 B (ดำ) (A-BX-E-00022)**

**ET-PROJECT BOX1 W (ครีม) (A-BX-E-00021)**

**ET-PROJECT BOX1 Y (เหลือง) (A-BX-E-00031)**

It is an all-purpose plastic box that can be cut or bored without any damaged because it is made by good plastic.



- Box size 7.5 x 2.5 x 5 cm.
- BOX1 S CLEAR BLUE COLOR
- BOX1 B BLACK COLOR
- BOX1 W CREAM COLOR
- BOX1 Y YELLOW COLOR



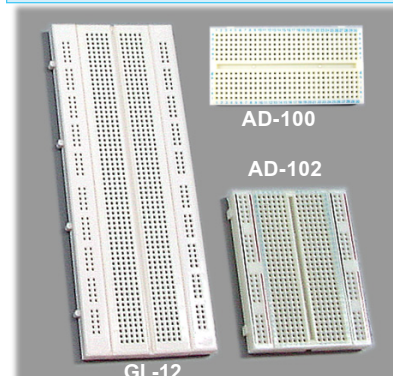
**ET-PROJECT BOX 2 B (A-BX-E-00026)**

**ET-PROJECT BOX 2 W (A-BX-E-00027)**



- Multi-purpose plastic box with good quality can be drilled without any broken
- It is suitably designed for ETT Control Boards (Size: PCB 15.3 x 9 cm.), so it can contain any board perfectly. Moreover, user can assemble board with box to be the product well.
- Box Size: 5.25 x 12.00 x 17.50 cm
- 2 Colors: B version is Black color and W version is Cream color.

**There's 3 modes to experiment;**



- GL-12 (C-YA-A-00005)**  
Size 172 x 65 x 10m/m with 840 point
- AD-100 (C-YA-A-00046)**  
Size 81 x 42 x 9 m/m with 360 point
- AD-102 (C-YA-A-00004)**  
Size 81 x 62 x 9 m/m with 456 point