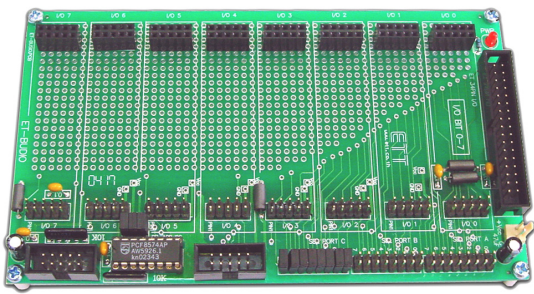


# ET-BUSIO ชุด I/O เอนกประสงค์ ที่คุณเลือก I/O ต่างๆ ได้เอง

## ET-BUSIO (P-ET-A-00155)



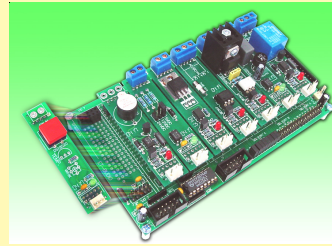
ET-BUSIO is base board of INPUT/OUTPUT and users may select I/O MODULE to connect with ET-BUSIO board and is able to expand 8 CHANNEL INPUT/OUTPUT I/O MODULE. For example; users may connect OUTPUT RELAY 6 CHANNEL as DC INPUT 1 CHANNEL and as BUZZER 1 CHANNEL.

### There's I/O MODULE to select as :

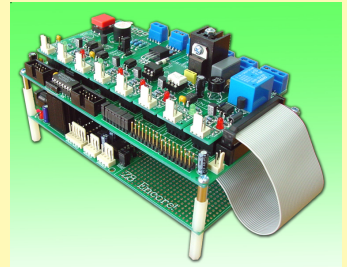
- [SSRAC](#)
- [RELAY](#)
- [SW](#)
- [PHOTO](#)
- [ACIN](#)
- [BUZZER](#)
- [DCOUNT](#)
- [DCIN](#)
- [PCB](#)

- ET-BUSIO AS BASE BOARD OF I/O MODULE
- BE EXPANSION 8 CHANNEL INPUT/OUTPUT I/O MODULE
- BE ABLE TO CONNECT WITH ETT BOARD THROUGH 34 PIN ET I/O BUS, 10 PIN ET BUS OR 10 PIN I2C BUS OF ETT (USE IC PCF8574 AS OPTION IN CAS OF USE 10 PIN I2C BUS)
- CONNECT THROUGH 34 PIN ET I/O BUS FOR 3 BOARDS PER 1 PORT 34 PIN BY SELECT JUMPER I/O AS A, B, OR C
- CONNECT THROUGH 10 PIN ET BUS FOR 1 BOARD
- CONNECT THROUGH 10 PIN I2C BUS OF ETT FOR 8 BOARDS BY SELECT JUMPER A0, A1, A2
- PCB SIZE 15.3 x 9 CM. WITH PROTOTYPE WORKING AREA
- ET-BUSIO INCLUDES; ET-BUSIO BOARD,

1 OF 34 PIN PAIR CABLE,  
1 OF 10 PIN PAIR CABLE,  
MANUAL



CONNECTING BETWEEN ET-BUS I/O WITH I/O MODULE AND BE ABLE TO EXPAND 8 CHANNEL INPUT/OUTPUT I/O MODULE



CONNECTING BETWEEN ET-BUS I/O WITH I/O MODULE INTO ETT CONTROLLER BOARD THROUGH PORT 34 PIN ET I/O BUS, 10 PIN ET BUS OR 10 PIN I2C BUS



## I/O MODULE

It is INPUT/OUTPUT Board uses with ET-BUSIO. There's various styles of INPUT/OUTPUT with 1 channel to select for suitable project work and I/O MODULE is designed as 3 PIN for connect with Port 3 PIN in ET-ROBOT.

### ET-BUSIO-SSRAC (P-ET-A-00160)



Its function is 1 CHANNEL SOLID STATE RELAY for ON/OFF AC 110V Power Supply or 220V. It run as ZERO CROSSING and INPUT/OUTPUT is isolated by OPTO ISOLATION. Use with Current 6 A 400 V.

### ET-BUSIO-PHOTO RELAY (P-ET-A-00162)



Its function is Relay of PHOTO MOS RELAY and is able to use DC or AC Power Supply. INPUT/OUTPUT is isolated by OPTO ISOLATION and uses PHOTO MOS RELAY No. AQV210E. Be able to use Power Supply maximum 130mA with FUSE 100mA on board.

### ET-BUSIO-DCOUT (P-ET-A-00158)



Its function is OUTPUT DC by using Power Transistor No.2SC1061 and INPUT/OUTPUT is isolated by OPTO ISOLATION. Use DC Power Supply maximum 50V/3A and OPEN COLLECTOR Operation.

### ET-BUSIO-DCIN (P-ET-A-00157)



Its function is INPUT signal into board by using Power Supply DC 5VDC, 12VDC, 24VDC, selecting Jumper on board and is isolated by OPTO ISOLATION.

### ET-BUSIO-ACIN (P-ET-A-00159)



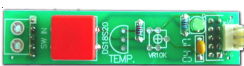
Its function is INPUT signal into board by using AC 220V Input Power Supply and is isolated by OPTO ISOLATION.

### ET-BUSIO - RELAY (P-ET-A-00163)



Its function is OUTPUT by using Relay as SW. Use AC or DC Power Supply and is isolated by OPTO ISOLATION with Port of NO, NC, COM. It uses Relay 5V COIL CONTACT size 5A/250VAC.

### ET-BUSIO-SW (P-ET-A-00161)



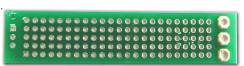
Its function is INPUT signal into board with press SW by using TACT SW with pressing SW button and LED Display. PCB is able to change into VR INPUT or DS1820 Temperature.

### ET-BUSIO-BUZZER (P-ET-A-00156)



It is Sound Generator OUTPUT with mini Buzzer and Transistor. It is isolated by OPTO ISOLATION.

### ET-BUSIO - PCB (A-PC-E-00237)



It is PCB size 7 x 15 mm. is designed to use with ET-BUSIO.