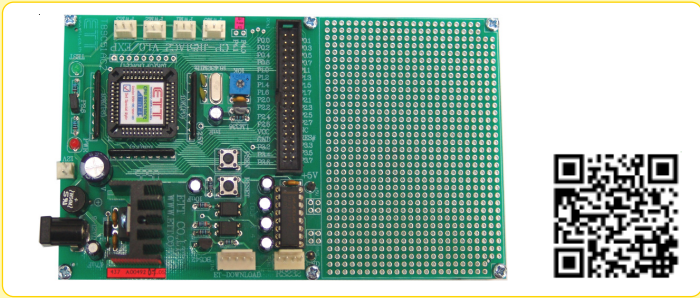


CP-JR51AC2 V1

(P-CP-A-00063)

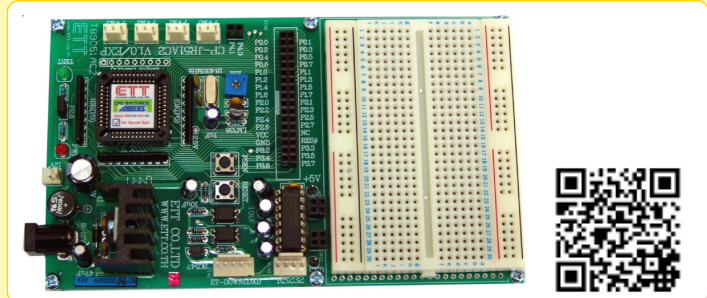


- CPU ATMEL 44 PIN PLCC NO. AT89C51AC2
 - X'TAL 18.432 MHz ON BOARD RUN 6 CLOCK OR 12 CLOCK PER 1 INSTRUCTION (36.864 MHz OR 18.432 MHz)
 - 32 KBYTE FLASH, 256 + 1 KBYTE RAM, 2 KBYTE EEPROM
 - 8-CH.10 BIT A-TO-D
 - 5 PIN DOWNLOAD PROGRAM
 - 34 PIN I/O ET BUS
 - POWER SUPPLY 7-12VDC
 - BOARD SIZE 15.3 x 9 CM.
 - 4 PIN RS232 MAX232 ON BOARD
 - 4-CH. 3 PIN PWM
 - 7805 POWER SUPPLY ON BOARD
 - FREE AREA PCB SIZE 8.5 x 6 CM.
 - DOWNLOAD HEX FILE PROGRAM ON PC INTO BOARD THROUGH PORT RS232 DIRECTLY RUN ON OS WINDOWS 95/98/ME/XP/2000
 - CP-JR51AC2 V1.0 INCLUDES;
1. CP-JR51AC2 V1.0 BOARD
 2. CD-ROM
 3. CABLE DOWNLOAD ET-DOWNLOAD RD2
 4. CABLE DOWNLOAD ET-RS232 DB 9 PIN



CP-JR51AC2 V1 EXP

(P-CP-A-00064)

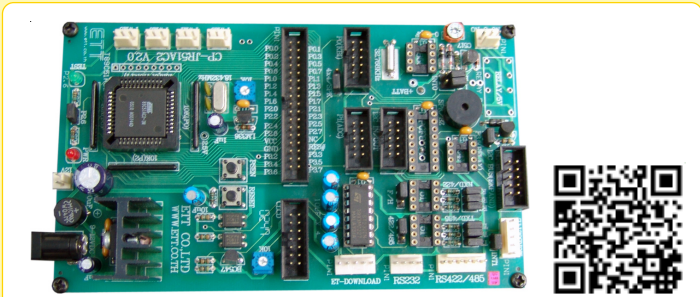


- CP-JR51AC2 V1.0 EXP ITS SPECIFICATIONS ARE AS SAME AS CP-JR51AC2 V1.0 AND THERE'S PROJECT BOARD, FEMALE CONNECTOR 34 PIN I/O ET BUS AND FEMALE VCC AND GND ADDITIONALLY
 - 8 x 6 CM. AD-102 PROJECT BOARD USES WITH JUMPER SET "ET-JWBOX300" OR ET-HARDWARE KIT V1 THAT HAS ACCESSARIES SUCH AS R, C, LED, 7-SEGMENT, SWITCH, STEPPING MOTOR
 - DOWNLOAD HEX FILE PROGRAM ON PC INTO BOARD THROUGH PORT RS232 DIRECTLY RUN ON OS WINDOWS 95/98/ME/XP/2000
 - POWER SUPPLY 7-12VDC
 - CP-JR51AC2 V1.0 EXP INCLUDES;
1. CP-JR51AC2 1.0 EXP BOARD WITH PROJECT BOARD
 2. CD-ROM
 3. CABLE DOWNLOAD ET-DOWNLOAD RD2
 4. CABLE DOWNLOAD ET-RS232 DB 9 PIN



CP-JR51AC2 V2

(P-CP-A-00065)



- CPU ATMEL 44 PIN PLCC NO. AT89C51AC2
 - X' TAL 18.432 MHz ON BOARD RUN 6 CLOCK OR 12 CLOCK PER 1 INSTRUCTION (36.864 MHz OR 18.432 MHz)
 - 32 KBYTE FLASH, 256 + 1 KBYTE RAM, 2 KBYTE EEPROM
 - 8-CH.10 BIT A-TO-D
 - 5 PIN DOWNLOAD PROGRAM
 - 34 PIN I/O ET BUS
 - 10 PIN ET PORT
 - 10 PIN 12C BUS
 - MINI SPEAKER ON BOARD
 - 4-CH. 3 PIN PWM
 - 12C PCF8574 INPUT/OUTPUT PORT (OPTION)
 - 12C RTC PCF8583 WITH 240 BYTE INTERNAL RAM (OPTION)
 - 32K-512K BIT 24XX EEPROM MEMORY (OPTION)
 - 1-CH.RELAY 2 CONTRAC, 5VDC COIL (OPTION)
 - 14 PIN CHARACTER LCD PORT
 - POWER SUPPLY 7-12VDC
 - BOARD SIZE 15.3 x 9 CM.
 - 4 PIN RS232 MAX232 ON BOARD
 - 6 PIN RS422/485 (OPTION)
 - 7805 POWER SUPPLY ON BOARD
 - 10 PIN 12C IN/OUT
 - 10 PIN ADC I/O
 - MAGNETIC CARD ETT PORT
 - 34 PIN I/O ET BUS
 - DOWNLOAD HEX FILE PROGRAM ON PC INTO BOARD THROUGH PORT RS232 DIRECTLY RUN ON OS WINDOWS 95/98/ME/XP/2000
 - CP-JR51AC2 V2 INCLUDES;
1. CP-JR51AC2 V2 BOARD
 2. CD-ROM
 3. CABLE DOWNLOAD ET-DOWNLOAD RD2
 4. CABLE DOWNLOAD ET-RS232 DB 9 PIN



CP-SPI/RD2 V1

(P-CP-A-00037)

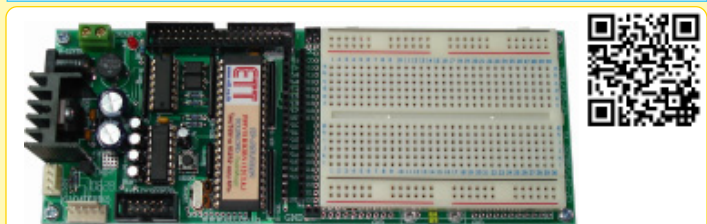


- CPU P89V51RD2 64 KBYTE PROGRAM FLASH MEMORY, 1 KBYTE RAM IN CPU, RUN 6 CLOCK 1 INSTRUCTION
 - RUN 18.432 MHz ON BOARD
 - 32 BIT I/O PORT CPU IN CONNECTOR
 - 24 BIT I/O PORT CPU IN 34 PIN ET-BUS
 - RS232 PORT MAX232 ON BOARD
 - PCB SIZE 18 x 6.8 CM.
 - POWER SUPPLY 7-12VDC
 - CP-SPI/RD2 V1 INCLUDES ;
1. CP-SPI/RD2 V1 BOARD
 2. CABLE DOWNLOAD ET-RS232 DB 9 PIN
 3. CD-ROM, USER MANUAL



CP-SPI/RD2 V1 EXP

(P-CP-A-00039)



- CP-SPI/RD2 V1 EXP ITS SPECIFICATIONS ARE AS SAME AS CP-SPI/RD2 V1 AND THERE'S PROJECT BOARD, FEMALE PIN HEADER AND FEMALE VCC AND GND ADDITIONALLY
 - CP-SPI/RD2 V1 EXP INCLUDE;
1. CP-SPI/RD2 V1EXP BOARD WITH PROJECT BOARD
 2. CABLE DOWNLOAD ET-RS232 DB 9 PIN
 3. CD-ROM

